

Cypress Soaring

December 2009



*To make the plane go up, pull the stick back.
To make the plane go down, pull the stick back farther.*

Instructor Schedule

Jose Cordova **Sat 12/5**
Tim Kreiner **Sun 12/6**
Art Wallace **Fri 12/11**
Gary Timbs **Sat 12/19**
Chuck Gifford **Sat 12/26**

NOTE: You will need a desert check out before flying solo

BFRs must be scheduled AT LEAST 10 days before your desired flight date (You do have a quiz to prepare beforehand, you know)

Please PHONE cancellations to your instructor at least 24 hours in advance to free up the slot for someone else or to save an unnecessary trip to the field

Mail dues to:

Colin Wilson
41420 Resorter Blvd
Palm Desert, CA 92211
Write "Cypress Soaring" on the lower left corner of the envelope

Annual Meeting

Saturday December 5th
4:30pm
Don Johnston's Home
19102 Tigerfish
Huntington Beach, CA

Annual Meeting

The Annual meeting will be held Saturday December 5th beginning at 4:30pm at Don Johnston's (see map). The club will provide a prime rib & a honey baked turkey for the main course.

The rest of us bring everything else:

A-F bring salad or dessert
G-M bring Hors D'Oeuvres or snacks
O-W bring side dish

To keep the meeting short, we'll meet before we eat; probably about 5:00pm.

The annual awards will be presented after dinner.

The club budget is based upon 30 Active members. As of mid-November, we are down to 19 members.

We will need to discuss recruitment activities, the possibility of grounding some of our ships during the year and increases in the dues.

October Income	\$1558.20
October Expenses	-\$55.27
October Net Income	\$1613.47
YTD Income	\$15,174.62
YTD Expenses	<u>\$13,070.46</u>
YTD Net	\$2104.16

Current Assets	
Savings	\$26,521.09
Checking	\$2,423.97

Board of Director Candidates

Don Johnston and Tim Kreiner were this year's nominating committee.

They managed to "convince" the following members to serve on next year's Board.

President Scott Lance
Vice President Eric Bick
Alternates Scott Boelman
Mike Kalina
Treasurer Colin Wilson
Secretary Dave Boyer
Maintenance Gary Timbs
Operations Tim Kreiner

Nominations are always welcome at the meeting. (and some of these guys might be the ones who do the nominating)

Upcoming Events

Sat 12/5 Annual Meeting
Fri 12/11 National Noodle Ring Day



MAINTENANCE

Check website for current status

Krosno	At Krey; tied down
L-33	At Krey; tied down
PW-6	At Krey in the trailer
Discus	At Krey in the trailer

Flight Operations

The new location has resulted in new club ops procedures.

1. All members will require a desert check out before flying solo
2. Tows are regularly scheduled on Fridays and Saturdays only.
3. Sunday tows are available **but must be arranged with the tow pilot and John Krey 48 hours in advance.**

They will tow on Sundays but request that we try and schedule 2 or 3 to make it worthwhile.

TREASURER

Unfortunately, due to the move from Hemet and the general state of the economy, we have lost a number of members.

Flight Operations (cont'd)

Tow Pilots available on Sunday

Jim Hultman mojavepilot@hotmail.com	805-453-2871
Keith James	760-981-9857
Mike Malis aerodyne@socal.rr.com	(661) 904-3814 cel (661) 284-6967 home (661) 572-5528 work
Les Hurdle LH101@avradionet.com	(661) 944-5223 home (661) 304 6556 cel
Ron Caraway (back up pilot) SEERONFLY@aol.com	(760) 247-6771 home

For a current Friday and Saturday towplane schedule, Click on the Krey Field link on the club website (it's on the "lessons" page.

Once on the Krey site, click on "**Tow Pilot Schedule**".

That will open a "**Pilot Schedule.com**" page.

Click on the "LOGON" at the top of the page.

At the log on screen, log on to the Krey schedule using the "Log on using first & last name" as shown below:

FBO code:	KFTP
First name:	glider
Last Name:	guider
Password:	krey

Getting to the Annual meeting

(these are Mapquest directions; good luck)

405 to Brookhurst

South on Brookhurst to
Garfield Ave

Right on Garfield to
Bushard ST

Left on Bushard to Bass Dr

Left on Bass Dr to Bushard
St

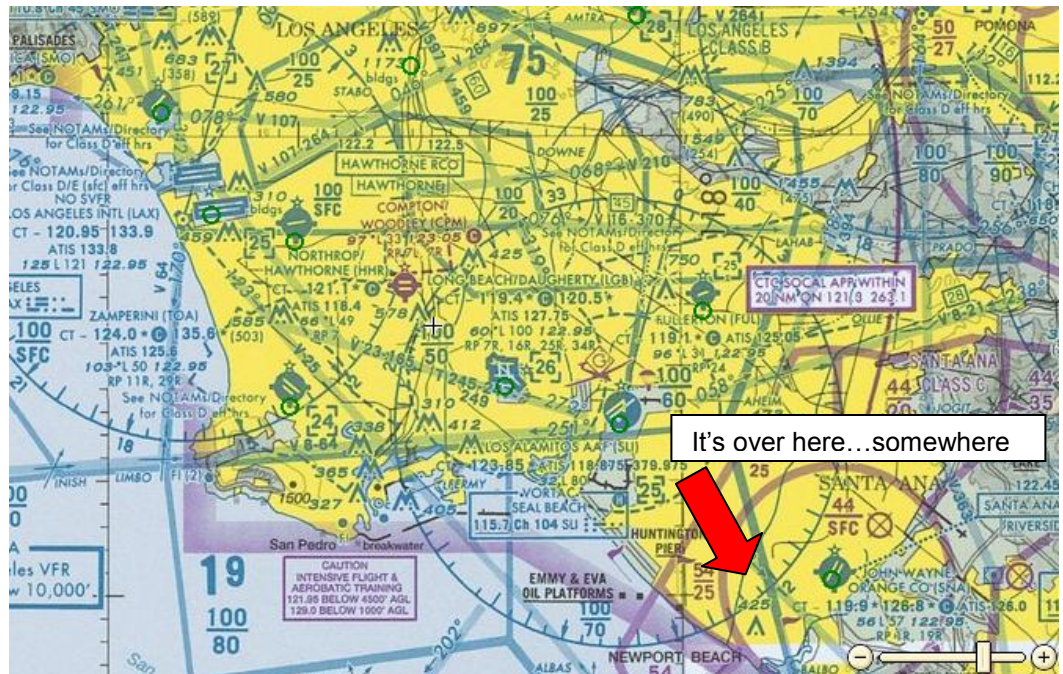
Right on Bushard
(becomes Velardo Dr) to
Tigerfish

Left on Tigerfish to 19102
(on right)

Phone 714-965-0449

NOTE:

If you come across a
LARGE body of water,
you're too far south



November Quickie Quiz

Answers

If the atmospheric pressure and the temperature remain the same, how would an increase in humidity affect takeoff performance?

1. Longer takeoff distance; the air is more dense
2. **Longer takeoff distance; the air is less dense**
3. Shorter takeoff distance; the air is more dense

How can a pilot increase the rate of turn and decrease the radius at the same time?

1. Shallow the bank & increase airspeed
2. **Steeper the bank & decrease airspeed**
3. Steepen the bank & increase airspeed

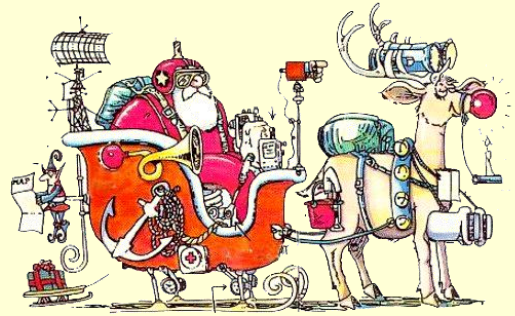
Rate of turn is determined by horizontal component of lift; radius of turn is determined by airspeed.

Increasing the bank increases the rate of turn;

Decreasing the airspeed decreases the radius of the turn

December Quickie Quiz

Answers next month



List the equipment required for powered aircraft for day VFR flight.

List the equipment required for powered aircraft for VFR night flight.

Is this aircraft legal for night VFR flight?
Is it legal for Day VFR flight?

No, you don't win anything. You're supposed to know this stuff already